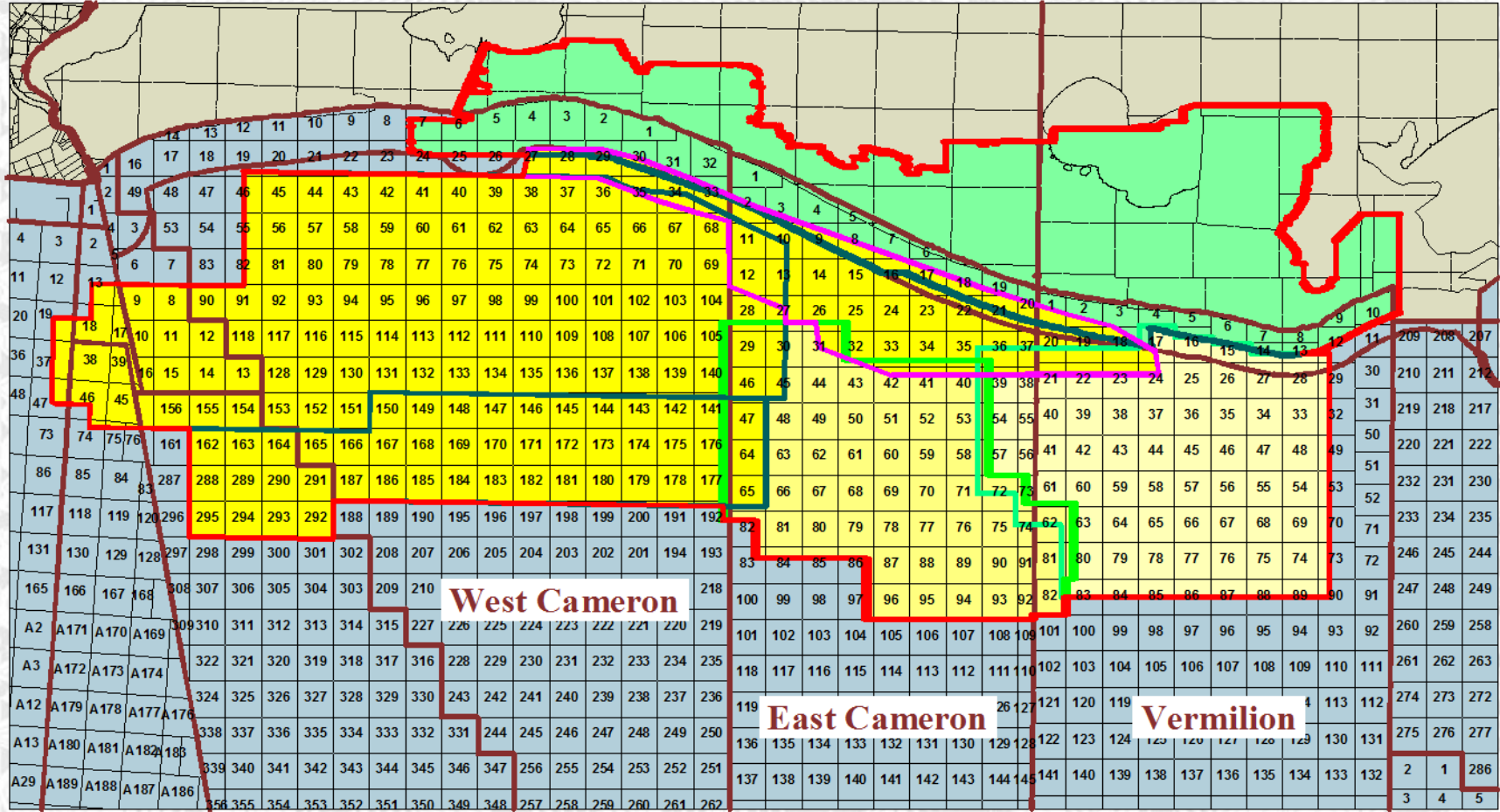
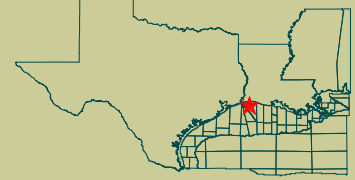


Cameron-Vermilion Depth 1

Offshore Gulf of Mexico

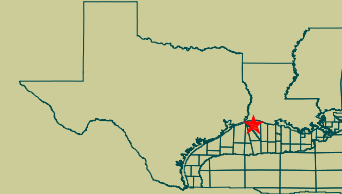
3060 Square Miles



Cameron-Vermilion Depth 1

Offshore Gulf of Mexico

3060 Square Miles



Acquisition Parameters

	<i>West Cameron 30, 31 & 32</i> (bright yellow)	<i>Cameron-Vermilion TZ</i> (green)	<i>East Cameron 01 & 02</i> (medium yellow)	<i>Vermilion I, II & III</i> (light yellow)
Geometry:	<u>Inline Swath (E-W & ESE-WNW)</u>	<u>Patch / Swath</u>	<u>Patch</u>	<u>Inline Swath (N-S)</u>
Receiver interval:	<u>50m</u>	<u>220ft</u>	<u>50m</u>	<u>50m</u>
Source interval:	<u>75m (37.5m alternating)</u>	<u>220ft</u>	<u>50m</u>	<u>50m</u>
Source strength:	<u>118bar-m</u>	<u>6lb / 50bar-m</u>	<u>100bar-m</u>	<u>82bar-m</u>
Bin size:	<u>25m x 40m</u>	<u>110ft x 110ft</u>	<u>25m x 25m</u>	<u>50m x 50m</u>
Nominal fold:	<u>120</u>	<u>60</u>	<u>60</u>	<u>120</u>
Maximum offset:	<u>9000m</u>	<u>35,640ft</u>	<u>6000m</u>	<u>6000m</u>
Record length:	<u>13sec</u>	<u>10sec</u>	<u>11sec</u>	<u>8sec</u>
Vintage:	<u>2005, 2006 & 2007</u>	<u>1997</u>	<u>1995</u>	<u>1991 & 1992</u>

Processing

Anisotropic PreStack Time Migration (Dec 2008)

1. Geometry verification, resample to 4ms, offset limit to 9Km
2. Noise Attenuation
3. Co-sensor summation
4. Noise Attenuation
5. Spectrally constrained surface consistent deconvolution
6. Datum, Residual & Refraction Statics
7. Surface Consistent Amplitude Compensation (SCAC)
8. Noise Attenuation
9. Phase & Time match to WC30 & 31
10. Residual Statics, Noise Attenuation & Phase match
11. Amplitude match to WC30 & 31
12. Interpolation & Regularization
13. KPrSTM velocity analysis @ 1Km w/ anisotropy
14. Anisotropic KPrSTM (25x20m, 60 offsets @ 150m)
15. Stacking velocity analysis @ ½Km
16. Radon demultiple, ORAAC & AFA
17. Final Stacks
18. DAS, Tau-p, TVF & RAAC

Anisotropic PreStack Depth Migration (Aug 2009)

19. Three iterations of KPrSDM cell based 3D Common Image Point tomography for sediment velocity determination @ 200m
20. KPrSDM velocity analysis @ 1Km w/ anisotropy
21. Anisotropic KPrSDM (25x20m, 60 offsets @ 150m)
22. Stacking velocity analysis @ ½Km
23. Radon demultiple, ORAAC & AFA
24. Final Stacks
25. DAS, Tau-p, TVF & RAAC

Products

Anisotropic KPrSTM:

- A. Raw, Final & Enhanced (structural) Stacks
- B. Angle Stacks (2-14°, 14-26°, 26-38° & 38-50°)
- C. Raw unflattened (w/o NMO) gathers
- D. Conditioned (w/ NMO) gathers

Anisotropic KPrSDM:

- E. Raw, Final & Enhanced (structural) Stacks
- F. Angle Stacks (TBD)
- G. Raw unflattened (w/o NMO) gathers
- H. Conditioned (w/ NMO) gathers